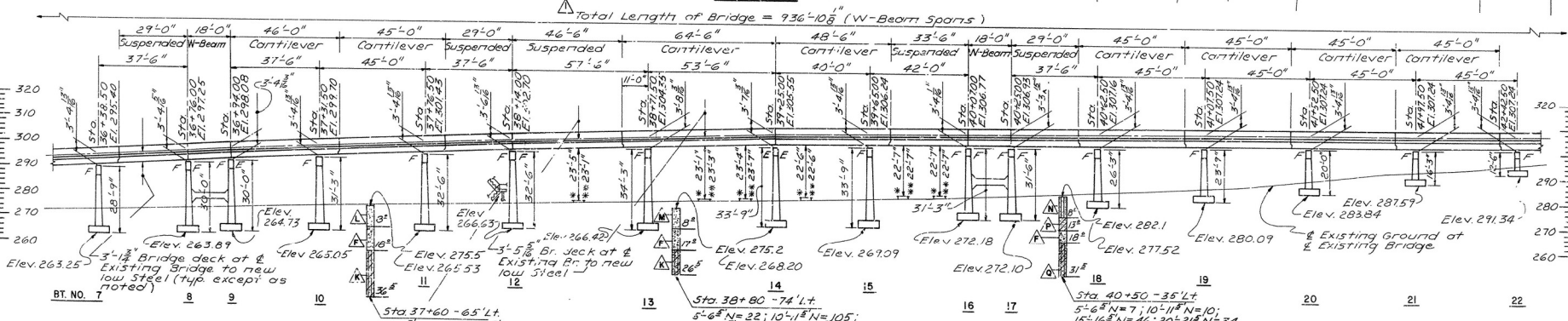
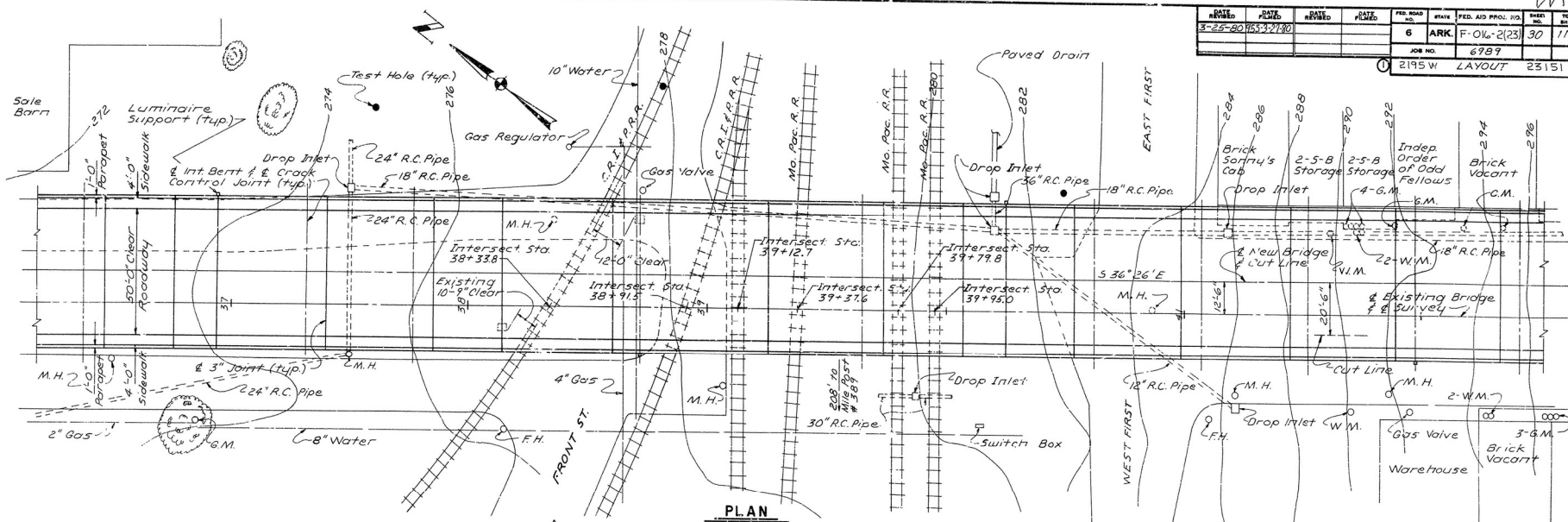


DATE REVISED	DATE FILMED	DATE REVISED	DATE FILMED	FED. ROAD NO.	STATE	FED. AID PROJ. NO.	SHEET NO.	TOTAL SHEETS
3-25-80	9553-2730			6	ARK.	F-O-W-2(23)	30	110
				JOB NO.	6989			
				① 2195 W	LAYOUT		23151	



SHEET 2 OF 3
LAYOUT OF
R R OVERPASS
HWY. 270 R R OVERPASS WIDENING
(MALVERN)
HOT SPRING COUNTY
ROUTE 270 SEC. 7
ARKANSAS STATE HIGHWAY COMMISSION
LITTLE ROCK, ARK.

DRAWN BY: J.P.S. DATE: 11-7-78
CHECKED BY: STF DATE: 1-5-79 SCALE: 1"=20'-0"
DESIGNED BY: _____ DATE: _____

BRIDGE NO. 21950 DRAWING NO. 23151

For removal of existing stairs between Bertt Nos. 11 & 12 - see Job S.P. "Remodeling Existing Bertts."

- * Clearance from top of rail to new low steel.
- ** Clearance from top of rail to existing low steel.

△ Revised Br. Length;
by J.P.S. ; date 3-25-80